



纵览黄浦江盛景，坐落于北外滩建筑群的新地标——上海外滩W酒店为上海这座活力四射、兼容并包的东方魅力之都，带来一场全新的感官盛宴。由金光集团投资打造的上海外滩W酒店，用极具创意的设计将老上海的情怀与新时代的前卫先锋巧妙结合，创新演绎东方与西方文化的碰撞，打造出一场穿越时间与空间的激情之旅。

With limitless views overlooking the Huangpu River, W Shanghai will set the scene on the North Bund. Owned by Sinar Mas Group, the hotel features a blend of bold design and decadent style which combines to create a captivating contrast of Shanghai's past and its avant-garde present.

ELECTRIC WELCOME

上海外滩W酒店

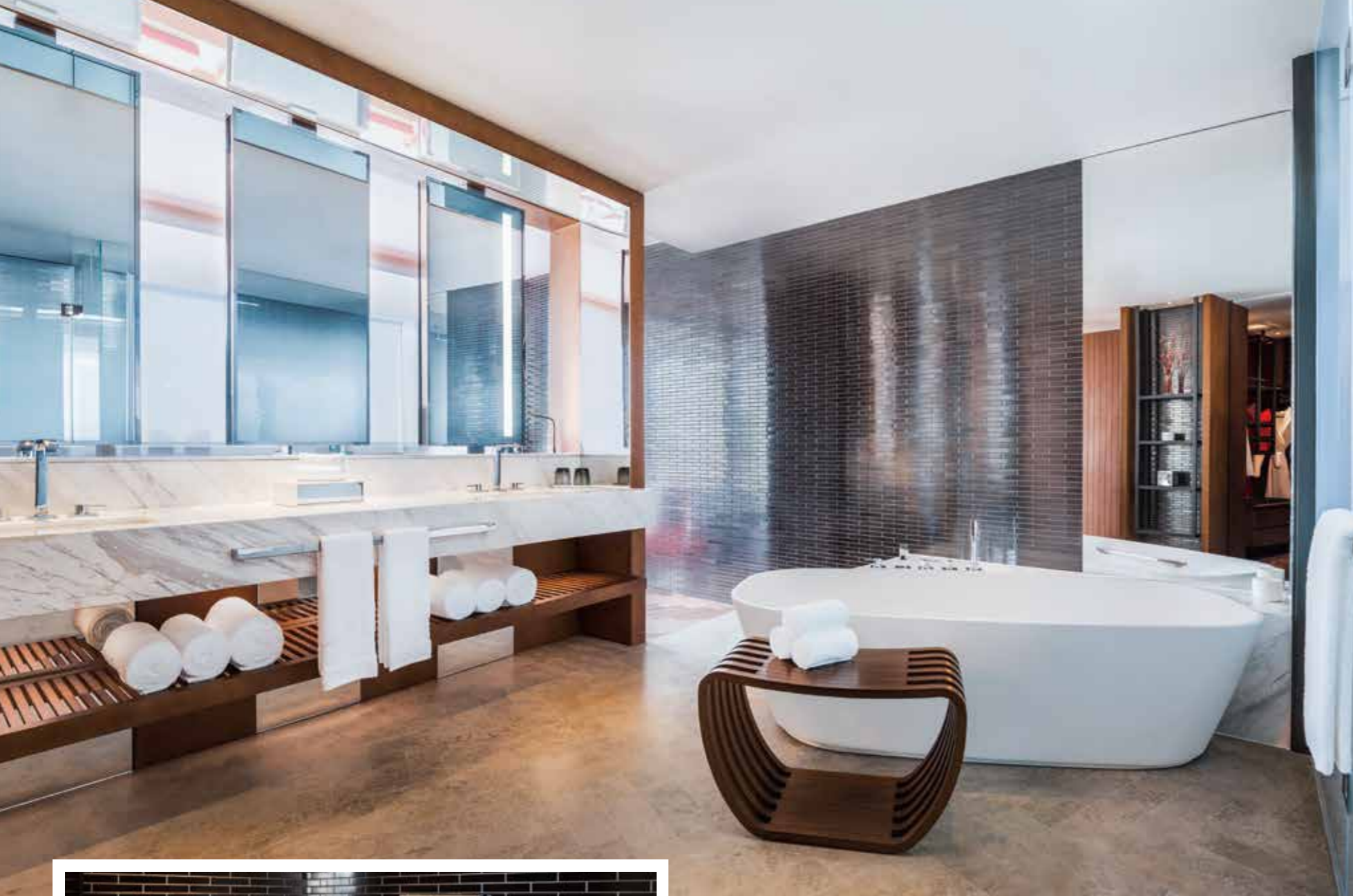




“上海作为世界上最具代表性的国际大都市之一，有美轮美奂的夜生活，极具个性的时尚氛围以及对新潮未来的不懈追求，而这些，都使这座城市成为展现W酒店品牌理念的理想之都。”W酒店全球品牌领导人Anthony Ingham说道，“遍布全球各地的W酒店都会通过与众不同的设计将目的地文化进行大胆诠释，从而在众多高端酒店品牌之中脱颖而出。此次我们也有理由相信，上海外滩W酒店将成为沪上潮人和国际旅行者的新宠。”

“Shanghai is one of the most cosmopolitan cities in the world, and its engaging nightlife, spirited fashion scene and passion for what's new/next makes it an ideal destination for the W brand,” said Anthony Ingham, Global Brand Leader, W Hotels Worldwide. “Our hotels across the world are incredibly unique- each reinterpreting its destination through design that is both hyper-local and yet, clearly W. The electrifying design of W Shanghai – The Bund is no exception, solidifying its position as a global flagship for W that is sure to attract both guests and savvy locals alike.”





项目简介

国家/地区：中国
 项目类型：奢华酒店
 开业年份：2017年
 房间数：374间
 隶属：万豪国际集团

产品型号

坐便器：诺锐斯特CES9683
 CW762B/TC384CVK
 洗脸盆：LW596RB
 MRZ710C CB1
 浴缸：PJY1876HPWV2
 PJY1636PWV1
 PJY1514PWV4

